



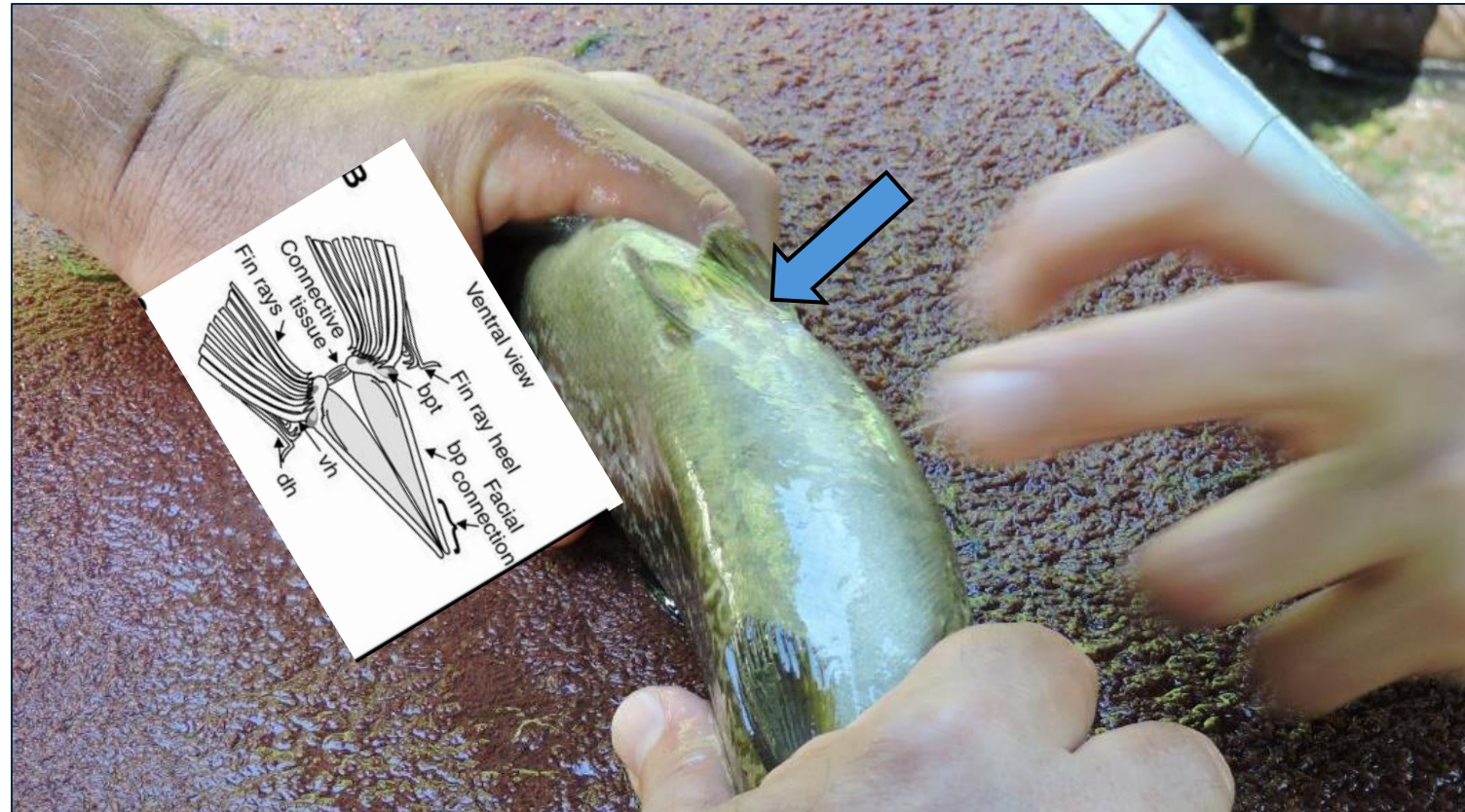
Experts in Unique Identification



*PIT tagging salmonid in the
pelvic girdle*

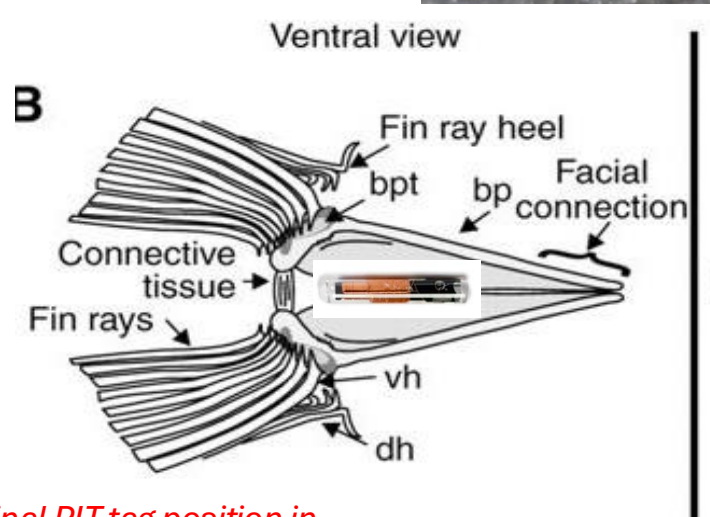
VodaIQ HQ12 - 12 x 2 mm PIT tag

Pelvic girdle PIT tagging

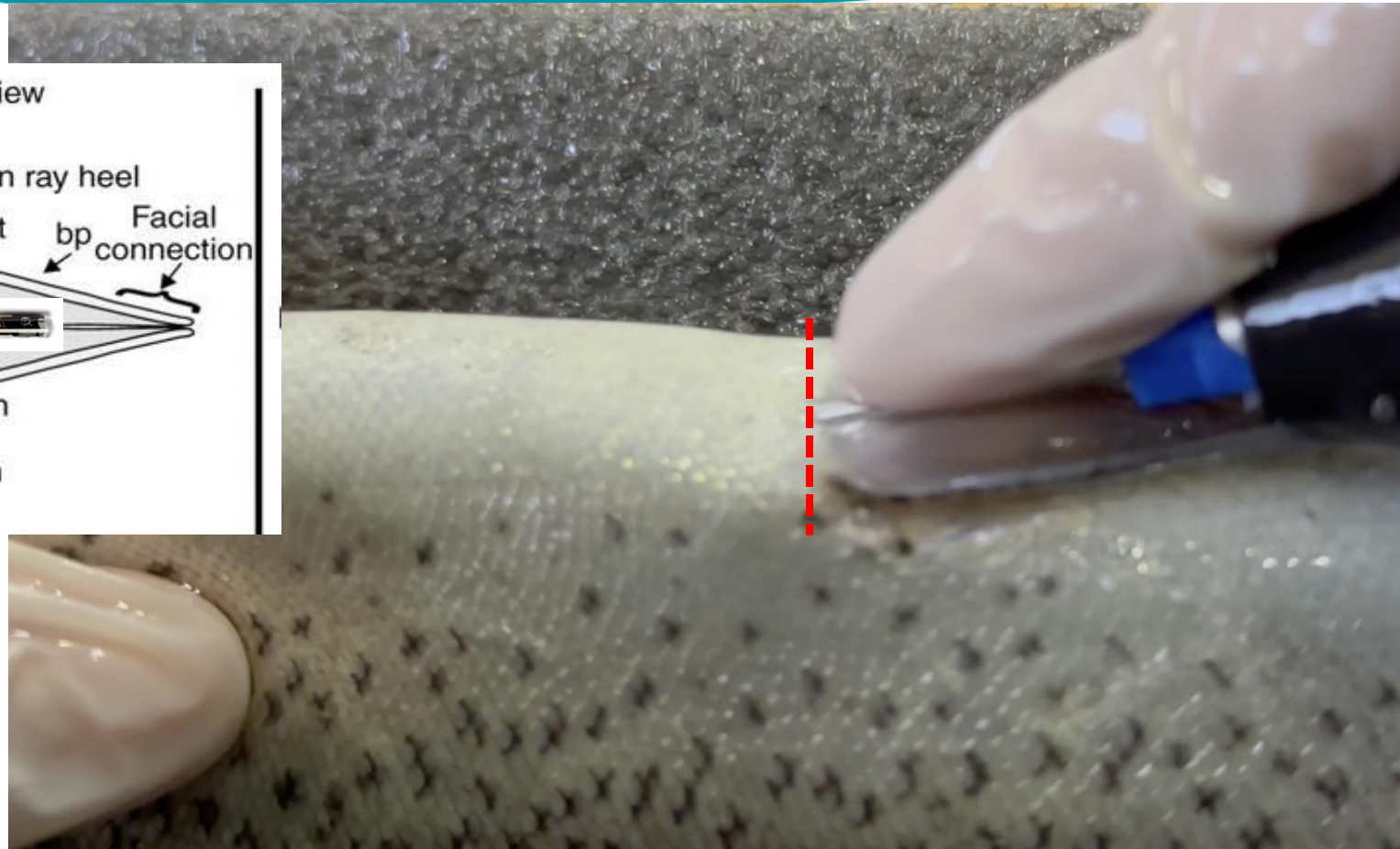


When implanting 12 x 2 mm PIT tags in the pelvic girdle, it is recommended to implant the tag in fish longer than 250 mm (salmonid) so to have enough space in the pelvic girdle

Pelvic girdle PIT tagging location

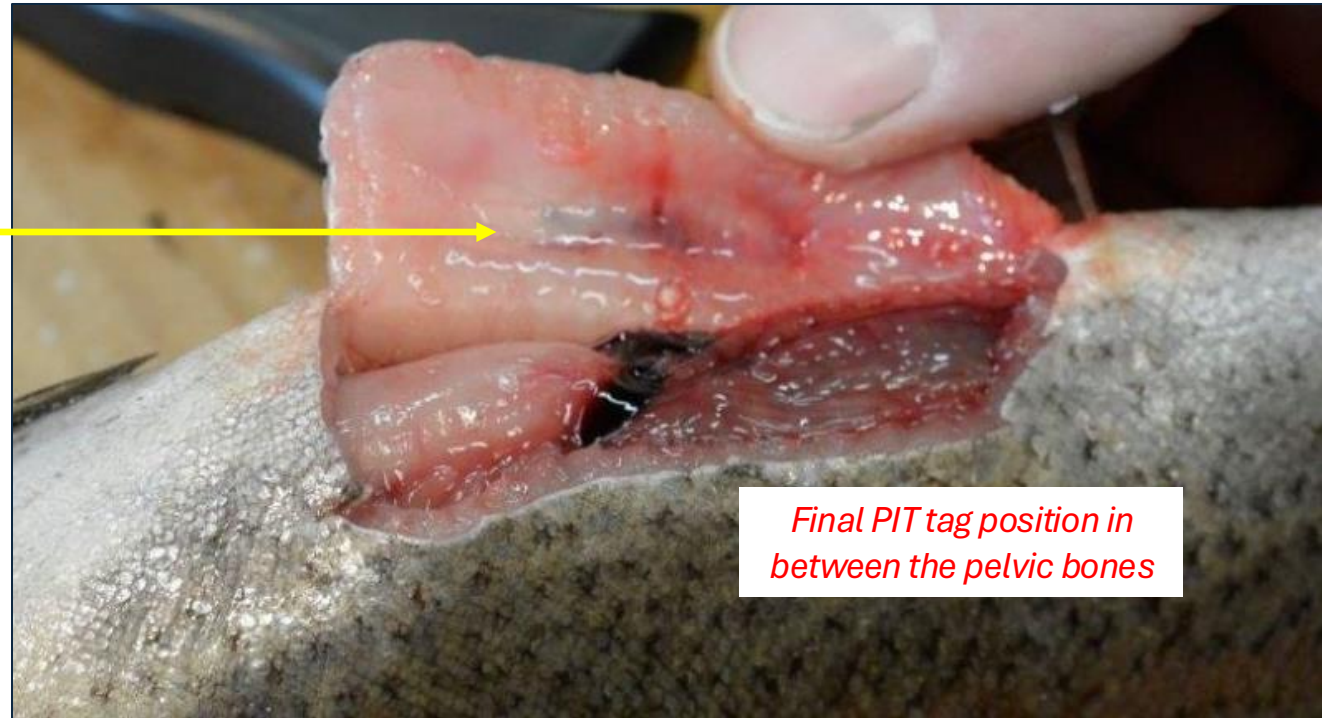
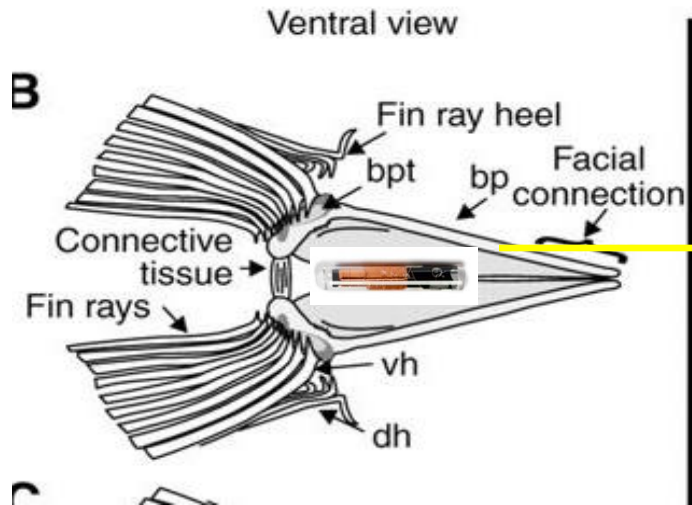


Final PIT tag position in between the pelvic bones



Point of entrance is just in front of the ventral fins (see red dotted line), first the needle (bevel down) at 45 °, then parallel to the fish body, then injecting the tag

Pelvic girdle PIT tagging



During tagging, it is important to maintain the needle as parallel as possible to the body to avoid the tag being injected in the body cavity and not in the pelvic girdle